

*Operating Engineers'
Regional Training Program
2011 - 2012 Training Schedule*



www.oetraining.com

Training Course Sign Up

Taking two weeks and learning the fundamentals of a new piece of equipment is a smart investment in yourself and your career. Through an intense combination of classroom work, operating the equipment, and performing various job site simulated tasks you will be prepared to take the journey level standards exam at the end of the course. Successful completion of the practical exam will earn you an additional skill to be added to your dispatch card at the union hall.

To Sign Up For Courses:

- ~ The \$25 Training Deposit must be received prior to members being placed in courses or on waiting lists. Mail a check or money order or call the office to pay with a debit or credit card.
- ~ Call the Training Center Office, mail or fax the class registration form, or register online with the courses and dates of classes you prefer to attend.
- ~ You will be notified with a confirmation letter from the Training Office of the course and start date that you will be placed within.



**Check the Website www.oetraining.com
For Class Updates And To Sign Up For Courses**

Training Program Policies

Placement Policy:

First Priority Enrollment: contractor/dispatcher/business agent referrals for members that meet second priority eligibility requirements or members that haven't taken training in last 2 years that meet second priority eligibility requirements.

Second Priority Enrollment: current IUOE Local 302/612 members with 200+ hours within the last 2 years working for a contributing contractor.

Third Priority Enrollment: current IUOE Local 302/612 members with less than 200 hours within the last 2 years working for a contributing contractor.

- If member is not immediately placed in their course request, they will be added to a wait list.
- Placement in classes is not necessarily first come, first served (i.e.: priority enrollments).
- The Training Center will call members to place in courses, but if after 3 unsuccessful attempts to contact the member with no return response or the member turns down the course, they will be removed from that course's wait list.

Training Deposit:

Training Deposit (\$25 yearly fee) must be received by the Training Center Office prior to being placed in a training course or on a waiting list.

- If the member is only taking satellite safety courses, the training deposit is not required.
- Check or money order can be mailed in or debit/credit cards can be taken over the phone.

Reimbursement: For members that have met the requirements, training deposits will be refunded at the end of every training season (typically July) unless they are signed up or wait listed for future courses. Members can also request reimbursement at any time.

Course Cancellations / No Shows:

- If a member is enrolled in a course and must cancel their seat for any reason with less than a week's notice, they will forfeit their training deposit. To be considered for future openings, a new training deposit must be received. If the member sends documentation regarding a reasonable excuse (i.e.: dispatch) for having to cancel their seat with less than a week's notice, the Training Program will determine if training deposit is forfeited or not.
- If a member is enrolled in a course and does not show up or call to cancel their seat, they will forfeit their training deposit and will be removed from all other training course wait lists. To be considered for future openings, a new training deposit must be received. If the member sends documentation regarding a reasonable excuse for not showing up, the Training Program will determine if training deposit is forfeited or not.
- If a member does not show up or cancel their seat in advance in 2 or more satellite safety courses, they will be removed from all other wait lists.
- If during a training course, the member has any unexcused tardiness or absences, unsafe practices, attitude problems, does not follow the rules/regulations, etc. the Training Program has the right to remove them from that course and possibly future courses as well.

Reimbursement Policy:

The Western Washington Operating Engineers/Employers Training Trust Fund will reimburse IUOE 302/612 members for Trust approved certifications who have worked at least 200 hours in the last two years for a contributing employer. To be reimbursed, eligible members must submit receipt(s) and a copy of the card(s) within six (6) months of the date of the certification. (Effective January 1, 2011)

Contact the Training Center Office to learn what certifications are reimbursable and for more information.

Specialty

Disaster Site Worker



This training is required to be a first responder to any disaster either man-made or natural. This course is the first step in accreditation of capable operating engineers willing to respond in the event of a disaster in or around Washington State. Also required are current Hazmat, OSHA 10, and First Aid/CPR cards as part of the certification. Without this card, you will not be eligible to work in such a situation.



Disaster Site Worker

Course Date:

* March 20 - 22, 2012 @ Bothell

Supervisor Training

Supervisory skill - or lack of it - directly affects every company's bottom line. Each day, decisions are made by every foreman and superintendent that are crucial to the success or failure of every construction project. The Supervisor Training is designed to specifically meet the needs of the construction industry. Developed, updated, and field-tested by and for contractors, the course consists of areas that focus on the knowledge and skills that every supervisor must have to be an effective manager of people, time, equipment, and materials.

Supervisor Course Date:

* March 26 - 28, 2012 @ Bothell

- | | |
|---|---------------------------------|
| ✓ Attributes of a Heavy Highway Construction Supervisor | ✓ Problem Solving |
| ✓ Company Responsibilities | ✓ Decision Making |
| ✓ Accident Prevention & Loss Control | ✓ Cost Awareness |
| ✓ Effective Communication | ✓ Contract Documents |
| ✓ Construction Supervisor Reflections | ✓ Project Planning & Scheduling |
| | ✓ Productivity Improvement |



**Instructor,
Marcus Mann**

Asphalt Paving

This course teaches pre-operational inspections, familiarity with control functions, techniques necessary to operate the paver, and techniques for proper asphalt rolling on a break down roller and a finish roller. Students will learn the set up and use of automatics and have the opportunity to learn job

layout for paving roads and parking lots. The students will spend time operating all four positions: topside, screed, break down roller, and finish roller.



Asphalt/Paving Course Dates:

- * November 21 - December 1, 2011
- * December 5 - 15, 2011
- * January 3 - 12, 2012
- * January 16 - 26, 2012
- * January 30 - February 9, 2012
- * February 13 - 23, 2012
- * February 27 - March 8, 2012
- * March 12 - March 22, 2012
- * April 2 - 12, 2012
- * April 16 - April 26, 2012

Training Courses

Grade Tech

The Grade Tech program is an introduction to construction surveying to operators. Classes will be open to all members, either apprentice or journey level who are interested in expanding their skills. The course is 80 hours and will cover set up and use of robotic total stations, GPS, data collectors, and more. People pursuing careers in this part of our industry will learn surveying mathematics as part of the course. Grade Tech is offered in four different skill sets from I - IV.



Grade Tech Courses:

~ To Be Scheduled as Needed ~

Please contact the Training Office to place your name on the waiting list

Grade Engineering

The Grade Engineering course includes the basics of grade checking and beyond. The course will go over blueprint reading, layout, utilizing dual-plane lasers for setting grade and dialing in percentages, and much more. Students must have a good understanding of basic grade checking prior to enrollment in this course.



Grade Engineering

Course Dates:

- * January 16 - 17, 2012
- * January 23 - 24, 2012
- * April 16 - 17, 2012
- * April 23 - 24, 2012

GPS

This Global Positioning System (GPS) course is designed for the grade crew looking to expand their knowledge with GPS skills. The course covers set-up, coordinate programming, field staking, and much more. Now is the time to learn the techniques of "stakeless grading". Students must have a good understanding of basic grade checking prior to enrollment in this course.



GPS Course Dates:

- * January 18 - 19, 2012
- * January 25 - 26, 2012
- * April 18 - 19, 2012
- * April 25 - 26, 2012

Safety

Trenching & Shoring

Completion of this course along with the designation of your contractor qualifies you to be the Competent Person needed on site for all trenching and excavation projects. The course covers soil testing and typing, proper use of trench boxes and shoring, and WISHA regulations.

POQ / Trenching & Shoring

Course Dates:

- * November 30, 2011 @ Bothell
- * December 6, 2011 @ Tacoma
- * March 17, 2012 @ Bothell
- * November 14, 2012 @ Bothell

Pipeline Operator Qualifications

Contractors require POQ certification while working on or near new or existing pipeline projects. Certification consists of four hours of classroom safety training. The card is issued by the International Union of Operating Engineers and needs to be refreshed every three years.

First Aid / CPR Course

Dates:

- * December 1, 2011 @ Bothell
- * December 5, 2011 @ Tacoma
- * January 20, 2012 @ Bothell
- * February 25, 2012 @ Tacoma
- * March 22, 2012 @ Bothell
- * April 14, 2012 @ Tacoma
- * November 15, 2012 @ Bothell
- * December 7, 2012 @ Tacoma

First Aid / CPR



You never know when an accident will happen, so be prepared for any situation. Knowing basic first aid can often limit the severity of any type of injury, or even prevent a death.

NEW: The Medic First Aid course is now taught and Certification is valid for two

40-HR Course Dates:

- * November 14 - 18, 2011 @ Bothell
- * December 10-11 and 17-18, 2011 @ Bothell
- * January 14-15 and 21-22, 2012 @ Bothell
- * February 6 - 10, 2012 @ Ellensburg
- * February 27 - March 2, 2012 @ Tacoma
- * April 30 - May 4, 2012 @ Bothell
- * November 5 - 9, 2012 @ Bothell
- * December 10 - 14, 2012 @ Tacoma

Hazardous Materials

Having a hazardous materials certification is required at many job sites. A 40-Hour class is required for those operators that are not currently certified. An 8-Hour refresher class is required every year to stay current. Students must bring their 40-Hour card with them to the Refresher courses.

8-HR Refresher Course Dates:



- * November 5, 2011 @ Tacoma
- * November 19, 2011 @ Bothell
- * December 7, 2011 @ Tacoma
- * December 16, 2011 @ Bothell
- * January 7, 2012 @ Bothell
- * January 28, 2012 @ Tacoma
- * February 11, 2012 @ Ellensburg
- * February 18, 2012 @ Bothell
- * March 31, 2012 @ Silverdale
- * April 21, 2012 @ Tacoma
- * May 5, 2012 @ Bothell
- * May 17, 2012 @ Tacoma
- * July 21, 2012 @ Tacoma
- * November 10, 2012 @ Bothell
- * December 15, 2012 @ Tacoma

Training Courses

Refinery Safety Overview

The RSO certification is recognized as an equivalent to C-STOP and is designed to educate workers on the health and safety hazards associated with working in the petrochemical industry. Attending the 5-hour initial course will provide you with the RSO certification card that is valid for two years. Refreshers consist of a 2-hour course and exam. Classes are available every Saturday at the West Coast Safety Services office in Bellingham or during the dates listed at right. A fee of \$50 will be charged at the Bellingham office- reimbursements are available to eligible members upon completion of the certification.

Bellingham Location: 1313 East Maple Street, #228

Phone Number: 360-685-0132

OSHA 10

OSHA requires that every construction company have employees who are trained in safety. The OSHA 10-Hour Certification Course offers the safety information required to meet federal standards on all construction sites and among all construction trades. Upon completion of this course, participants will receive a certification card from OSHA.

Note: OSHA 10 classes will take place over 2-days

OSHA 30



It is expected to become law that all supervisors have this credential in the very near future. Be ahead of the law and get the certification now!

The 30- hour training course is designed to provide a variety of training to workers with some safety responsibilities, foreman, crew leaders, field supervisors and anyone involved in the construction industry. Topics include Hazard awareness and prevention, proper PPE, Focus Four and many others.

Note: OSHA 30 classes will take place over 4-days. Participants must attend and complete all classes to be issued the OSHA 30 certification card.

RSO Course Dates:

- * December 1, 2011 @ Bothell
- * December 5, 2011 @ Tacoma
- * January 7, 2012 @ Bothell
- * February 25, 2012 @ Tacoma
- * November 15, 2012 @ Bothell
- * December 7, 2012 @ Tacoma

C-STOP training courses will no longer be provided by the Training Center.

It is recommended for members to switch to the Refinery Safety Overview (RSO) certification.

OSHA 10 Course Dates:

- * November 28 - 29, 2011 @ Bothell
- * January 9 - 12, 2012 @ Bothell
- * January 24 - 25, 2012 @ Tacoma
- * March 19 - 20, 2012 @ Bothell
- * November 12 - 13, 2012 @ Bothell

OSHA 30 Course Dates:

- * January 16 - 19, 2012 @ Bothell
- * March 5 - 8, 2012 @ Tacoma

Top Hand Competition

Try your hand at the competition and earn the Top Hand title and prizes!

Categories include: Dozer, Loader, Backhoe, Forkift, Excavator, Hydraulic Crane, and Lattice Crane

Cheer on fellow operators and bring the family for a day of fun!

Saturday, June 16, 2012



- ~ FREE BBQ Lunch
- ~ Excavator Car Smash
- ~ Climb the Tower Crane
- ~ Operate Equipment & Cranes
- ~ Kiddie Hay Hunt
- ~ Kiddie Activity Play Area
- ~ Jumpy Houses
- ~ Cash Bars
- ~ Music
- ~ Raffle Prizes
- ~ Simulators



2011 Top Hand Winners



Left to Right: Carlos Perez (Loader), Justin Drotz (Excavator), Richard Bostick (Dozer), Dean Beasley (Forklift), Glen Allen (Lattice Crane), Austin Sheely (Hydraulic Crane), Robert Bryant (Backhoe)

LOADER:

1ST: Carlos Perez
2ND: Is Osborne
3RD: Mike Ristvedt

HYDRAULIC CRANE:

1ST: Austin Sheely
2ND: Tucker Ford
3RD: Zac Zinn

DOZER:

1ST: Richard Bostick
2ND: Mike Ristvedt
3RD: Charles St Paul

EXCAVATOR:

1ST: Justin Drotz
2ND: Mike Ristvedt
3RD: Robert Bryant

FORKLIFT:

1ST: Dean Beasley
2ND: Todd Byerly
3RD: Mike Kloempken

LATTICE CRANE:

1ST: Glen Allen
2ND: James Wulf
3RD: Kerry Ford

BACKHOE:

1ST: Robert Bryant
2ND: Jeremias Perez
3RD: Jon Day



Heavy Equipment

The Journey Level Standards testing consists of a written exam and a practical exam and is offered on various pieces of equipment. The written tests demonstrates knowledge of specific terms, codes, and safety for each piece of equipment. Prior to taking equipment written exams, you must pass a basic grade checking written exam. The written exams are administered at the Union Halls and the Training Center. The practical exam requires operators to perform tasks within a defined time and tolerance to demonstrate the achievement of industry skill standards. This practical exam is administered at the Training Center by appointment or you may choose to test at the end of a two-week equipment course. Upon passing a test, you may add the equipment qualification to your work skills card in dispatch.

Prior to signing up for standard performance testing, you must have a minimum of two (2) years actual practical working experience in the building, heavy and highway construction industry.



Don't forget to notify your Dispatcher of any certificates received

Grade Checking

Having a working knowledge of grade checking and the ability to use it on the job is a vital tool for today's operators. This is a must-have skill to be on the fast-track for career advancement. The course includes stake reading, hubs and lath, offsets, laser set up and use, and ground safety. Students should leave with the ability to transfer grades, pull slopes, use swedes, figure percent of fall, and safely apply these skills in a variety of different job applications.



Grade Checking Course Dates:

- | | |
|----------------------------------|---------------------------------|
| * November 7 - 17, 2011 | * February 27 - March 8, 2012 |
| * November 21 - December 1, 2011 | * April 2 - 12, 2012 |
| * December 5 - 15, 2011 | * October 22 - November 1, 2012 |
| * January 3 - 12, 2012 | * November 5 - 15, 2012 |
| * January 30 - February 9, 2012 | * November 19 - 29, 2012 |
| * February 13 - 23, 2012 | * December 3 - 13, 2012 |

Training Courses

Backhoe

This course instructs equipment operators in the safety aspects, preventive maintenance, operating techniques, and proper procedures for using backhoes. Learn about pre-operational checks and inspections, nomenclature, develop familiarity with control functions, learn straight line digging, sloping, and ditch maneuvering around obstacles. Students should leave with the ability to dig a ditch to grade, safely dig past existing utilities, and with knowledge of sloping and shoring requirements.



Backhoe Course Dates:

- | | |
|----------------------------------|---------------------------------|
| * November 7 - 17, 2011 | * March 12 - 22, 2012 |
| * November 21 - December 1, 2011 | * April 2 - 12, 2012 |
| * December 5 - 15, 2011 | * April 16 - 26, 2012 |
| * January 3 - 12, 2012 | * October 22 - November 1, 2012 |
| * January 16 - 26, 2012 | * November 5 - 15, 2012 |
| * January 30 - February 9, 2012 | * November 19 - 29, 2012 |
| * February 13 - 23, 2012 | * December 3 - 13, 2012 |
| * February 27 - March 8, 2012 | |

Excavator

The track excavator is probably the most versatile piece of equipment used in the construction industry today. This course demonstrates techniques including proper work patterns, slope work, truck loading, and safe digging. Students should leave with the ability to safely operate an excavator in a variety of different applications.

More advanced operators will have their training focus on shoring requirements, boxes, sheets, pipe applications and laser, and working around utilities and overhead hazards.



Excavator Course Dates:

- | | |
|----------------------------------|---------------------------------|
| * November 7 - 17, 2011 | * March 12 - 22, 2012 |
| * November 21 - December 1, 2011 | * April 2 - 12, 2012 |
| * December 5 - 15, 2011 | * April 16 - 26, 2012 |
| * January 3 - 12, 2012 | * October 22 - November 1, 2012 |
| * January 16 - 26, 2012 | * November 5 - 15, 2012 |
| * January 30 - February 9, 2012 | * November 19 - 29, 2012 |
| * February 13 - 23, 2012 | * December 3 - 13, 2012 |
| * February 27 - March 8, 2012 | |

Dozer

This course teaches pre-operational checks and inspections, develops familiarity with control functions, basic dozer techniques including slot dozing, v-ditches, push cat applications, safety, proper traveling, cuts and fills, and efficient work patterns.

More advanced operators will be trained with smaller dozers working with finer materials to do precision grading. Students will work on slopes and multiple grade breaks in a simulated parking lot. This course will give a good dozer operator the extra bump in skills to become a finish dozer hand.



Dozer Course Dates:

- | | |
|----------------------------------|---------------------------------|
| * November 7 - 17, 2011 | * March 12 - 22, 2012 |
| * November 21 - December 1, 2011 | * April 2 - 12, 2012 |
| * December 5 - 15, 2011 | * April 16 - 26, 2012 |
| * January 3 - 12, 2012 | * October 22 - November 1, 2012 |
| * January 16 - 26, 2012 | * November 5 - 15, 2012 |
| * January 30 - February 9, 2012 | * November 19 - 29, 2012 |
| * February 13 - 23, 2012 | * December 3 - 13, 2012 |
| * February 27 - March 8, 2012 | |

Blade

This Blade course teaches pre-operational checks and inspections, develops familiarity with control functions, basic grader techniques, inverts, crowns, supers, slopes, ditching, maintaining roadways, job layout, and the use of automatics. Operators must know how to check their own grade prior to attending this course. This course is customized to fit everyone's skill level and is open to both beginning blade and finish blade hands.



Blade Course Dates:

- | | |
|----------------------------------|---------------------------------|
| * November 7 - 17, 2011 | * March 12 - 22, 2012 |
| * November 21 - December 1, 2011 | * April 2 - 12, 2012 |
| * December 5 - 15, 2011 | * April 16 - 26, 2012 |
| * January 3 - 12, 2012 | * October 22 - November 1, 2012 |
| * January 16 - 26, 2012 | * November 5 - 15, 2012 |
| * January 30 - February 9, 2012 | * November 19 - 29, 2012 |
| * February 13 - 23, 2012 | * December 3 - 13, 2012 |
| * February 27 - March 8, 2012 | |

Loader

Learn how to perform the pre-operational checks and inspections, understand the nomenclature, and develop familiarity with control functions and basic loader techniques. Instruction will also be given on backfilling, feeding the plant, stockpiling, open mine safety, pit operations, and loader and crusher safety. Students should leave with the ability to efficiently load trucks and operate a loader safely in a variety of applications.



Loader Course Dates:

- | | |
|----------------------------------|---------------------------------|
| * November 7 - 17, 2011 | * March 12 - 22, 2012 |
| * November 21 - December 1, 2011 | * April 2 - 12, 2012 |
| * December 5 - 15, 2011 | * April 16 - 26, 2012 |
| * January 3 - 12, 2012 | * October 22 - November 1, 2012 |
| * January 16 - 26, 2012 | * November 5 - 15, 2012 |
| * January 30 - February 9, 2012 | * November 19 - 29, 2012 |
| * February 13 - 23, 2012 | * December 3 - 13, 2012 |
| * February 27 - March 8, 2012 | |

Forklift

To operate a forklift, certification is required by Washington and federal laws. To obtain certification, the operator must successfully pass both a written and practical exam. The four-day training course offered at the Training Center will assist operators with learning the safety aspects and pre-operational inspections. There will be hands-on training and seat time to learn the controls and how to effectively operate them. As Operating Engineers, our training and testing goes far beyond this minimum requirement. Upon successful completion of this course, you will know how to run an all-terrain telescopic boom forklift to safely and productively perform a variety of tasks on a construction site.



Forklift Course Dates:

- | | |
|--|---|
| * November 7 - 11, 2011 @ Ellensburg | * March 19 - 22, 2012 @ Ellensburg |
| * November 14 - 17, 2011 @ Ellensburg | * April 16 - 19, 2012 @ Ellensburg |
| * January 30 - February 2, 2012 @ Ellensburg | * April 23 - 26, 2012 @ Ellensburg |
| * February 6 - 9, 2012 @ Ellensburg | * November 13, 2012 @ Bothell (Safety Class Only) |
| * March 12 - 15, 2012 @ Ellensburg | |

CDL Training Course

Since January 2009, the Washington State Department of Licensing requires 160-hours of training prior to obtaining a Commercial Driver's License. (www.dol.wa.gov)

Having a Commercial Driver's License will greatly improve the work opportunities available to you. To obtain your CDL, you must pass the Knowledge Tests (written tests) that pertain to your selected endorsement type and also pass the Skills Test (practical driving test).

The CDL Training Course teaches the laws and safety practices that apply to the operating of a commercial vehicle, how to inspect the vehicle to ensure its safe operation, the ability to control the vehicle while backing and moving between objects, and how to safely drive the vehicle in a variety of traffic situations. The Training Program will provide the vehicle for the Skills Test. A Third-Party Examiner will administer the Skills Test at the end of the training course.



FEES (Paid to the Department of Licensing):

- ~ Commercial driver instruction permit: \$10
- ~ Take general or endorsement knowledge test: \$10
- ~ Take CDL skills test: \$100 (This fee will be reimbursed to eligible members following successful completion)
- ~ Additional Fees for endorsements (Visit www.dol.wa.gov for more information)



CDL Course Dates:

- | | |
|-----------------------------------|-----------------------------------|
| * November 21 - December 15, 2011 | * April 23 - May 17, 2012 |
| * January 3 - 26, 2012 | * May 21 - June 14, 2012 |
| * January 30 - February 23, 2012 | * October 22 - November 15, 2012 |
| * February 27 - March 22, 2012 | * November 19 - December 13, 2012 |
| * March 26 - April 19, 2012 | |

Crane Training Courses

These crane courses are designed for operators who wish to begin a career working in the hoisting industry. Becoming a proficient crane operator is not just a matter of being able to read load charts and understand crane principles. The real key to successful training is time in the seat doing specific tasks that crane operators are commonly called upon to do. The primary focus is to have enough time in the seat to gain the skills and confidence necessary to succeed in the workplace.

The crane classes will continue their joint-training with members from the Pacific Northwest Ironworkers Local 86. The operators utilize the cranes while the ironworkers work on the ground rigging

and signaling for picks involving various types of loads.

Crane courses teach operator responsibilities, crane types and their uses, load charts, power line safety, communication (signaling), oiler responsibilities, and ground conditions. Also included is an introduction to hoisting, including control functions, crane placement for lift, load control, leveling, set up, and much more.



Hydraulic or Lattice Crane Course Dates:

- | | |
|-----------------------------------|-----------------------------------|
| * November 21 - December 15, 2011 | * April 2 - 26, 2012 |
| * January 3 - 26, 2012 | * April 30 - May 24, 2012 |
| * January 30 - February 23, 2012 | * October 22 - November 15, 2012 |
| * February 27 - March 22, 2012 | * November 19 - December 13, 2012 |

Tower Crane Course Dates:

- | | |
|----------------------------------|---------------------------------|
| * November 7 - 17, 2011 | * March 12 - 22, 2012 |
| * November 21 - December 1, 2011 | * April 2 - 12, 2012 |
| * December 5 - 15, 2011 | * April 16 - 26, 2012 |
| * January 3 - 12, 2012 | * April 30 - May 10, 2012 |
| * January 16 - 26, 2012 | * October 22 - November 1, 2012 |
| * January 30 - February 9, 2012 | * November 5 - 15, 2012 |
| * February 13 - 23, 2012 | * November 19 - 29, 2012 |
| * February 27 - March 8, 2012 | * December 3 - 13, 2012 |

Tower Crane students must be physically able to climb the 100-foot ladder several times a day

Crane Operator

To receive the NCCCO certification, operators must pass both a written and practical exam.

The Mobile written exam consists of a Core Exam and four Specialty Examinations to choose from: Large Telescopic (Swing Cab), Small Telescopic (Fixed Cab), Lattice Boom Truck, and Lattice Boom Crawler.

The Tower consists of one exam and can be taken alone or along with the Mobile crane exams. Other written exams offered are Articulating Boom Crane and Overhead Crane.

The Practical Exam consists of completing these tasks within an allotted amount of time. To view a video of the practical exam, visit: www.nccco.org Currently practical exams are available at the Training Center on Mobile and Tower cranes only. Contact the Training Office for more information.



For those operators with their CCO cards, certification must be refreshed every five years by passing the written exam only. There is no "grace period" after the date of expiration. Candidates whose certification has lapsed must take the full written and practical examinations over again.

Signing Up for the Written Exam:

Call the Training Center Office to get an application mailed to you or you can visit the NCCCO website at: www.nccco.org to download an application. Mail the completed application and payment to the Training Center Office by the deadline given to be registered for the next available written test. One week prior to the written exam, an optional refresher course is available for those interested in a brief review of current laws, standards, load chart interpretation, etc.

Computer Based Testing

Mobile, Tower, Overhead, and Recertification crane written exams are available to be taken on computers at certain Laser Grade testing locations. Rigger I and II and Signal Person (re-test candidates only) are also now offered. The exam fees are slightly higher than taking it on paper, but results are given when you have completed your exam (Note: The extra fee for taking the exam on the computer is not reimbursed).

Visit www.oetraining.com for more information on fees, testing areas, and instructions to sign up.

Ready to take the Practical Test?

Call the Training Center Office to set up an appointment to take the practical exam at the Ellensburg Training Center. You may take the Practical Exam prior to the Written Exam.

Don't forget to submit a copy of your certification card to the Training Center Office for fee reimbursement.

Visit the website for the Reimbursement Policies or Contact the Training Center Office for more information.

Certifications

Rigger I

The basic level rigger can perform simple, repetitive rigging tasks when the load weight, center of gravity, the rigging and rigging configuration are provided or known by the rigger through experience, or on-the-job training prior to the rigging activities. Specifically, they should be able to demonstrate or have knowledge of the following:

- Pre-use rigging inspection
- Identify and attach rigging with basic knowledge of hitch configurations, capacities, and basic knots
- Recognize associated hazards
- Signaling operations
- Use various types of rigging equipment and basic hitches and their applications



Signal Person

The written exam is designed to test a candidate's knowledge of standard hand signals, voice signals, as well as a basic understanding of crane operations and limitations. Practical exam candidates will face a projection screen and view computer-generated animations of a crane demonstrating different operations. Some questions will require a candidate to give the appropriate hand or voice signal(s), while others will test a candidate on his or her understanding of a crane's response once a particular signal is given. Both the written and practical exams must be passed within one year of each other.



Ready to Take the Exams?

Friday, December 23, 2011 @ Bothell ~ Training Course: December 19 - 22, 2011 @ Bothell (8 am - 5 pm)

Friday, December 30, 2011 @ Mt Vernon ~ Training Course: December 27 - 29, 2011 @ Mt Vernon (8 am - 5 pm)

Friday, January 13, 2012 @ Tacoma ~ Training Course: January 9 - 12, 2012 @ Tacoma (8 am - 5 pm)

***More Exams to be scheduled as needed (Check the website for updates)**

- Applications and exam information are located on the website: www.oetraining.com or contact the Training Center Office
- Training Trust will reimburse eligible members up to \$250 for these certifications

New OSHA Rule

Under the new rule, crane operators must be either certified by an accredited crane operator testing organization, such as the National Commission for the Certification of Crane Operators (NCCCO), or qualified by an audited employer program. Signalpersons must be qualified either by a third-party qualified evaluator, such as NCCCO, or an employer's qualified evaluator. The new rule took effect on November 8, 2010. Be sure to check the Labor and Industries website to stay current on the latest laws.

Mechanic

Mechanic training courses are held at the Bates Technical College in Tacoma where there is access to state-of-the-art industry technology, hands-on teaching aids, and computer labs. The Mechanic Training courses are typically scheduled during the evenings and on alternating weekends and last over a duration of several months.

The mechanic training program is continually updated to keep pace with new and emerging technologies. Access to factory training and troubleshooting of the latest equipment keeps our program in the forefront of the industry. There are several different mechanic training courses available including Welding, Electrical Systems, Engines, Air Brakes, Hydraulic Brake Systems, Powertrains, Power Shift Transmissions, Hydrostatic Drives, and Basic Hydraulics. Due to extensive hands-on training provided, class size is limited. When there is space in an Apprentice training course, journey level members are able to attend as well. This year, instructor, Ken Pagel, has added the additional training courses listed here and will be available to all members. Contact the Training Center Office for more information about mechanic courses and to add your name to the course waiting lists.



Troubleshooting CAT Heavy Equipment

(8-Hour Course)

In this new course, you will learn:

- ✱ CAT Electronic Technician Program (ET)
- ✱ How to use CAT's Service Tool (and how to make your own)
- ✱ How to access information and service codes through the CMS (Computerized Monitoring System) Panel
- ✱ How to troubleshoot different electronic sensors on the newer equipment
- ✱ How to use a digital multimeter to test sensors

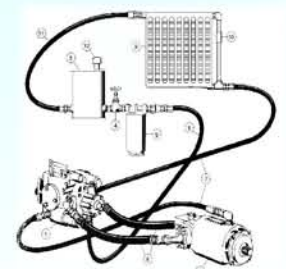


Intro to Closed-Loop Hydraulic Systems

(8-Hour Course)

In this new course, you will learn:

- ✱ Basic hydraulics theory
- ✱ Closed loop vs. Open loop systems
- ✱ Hydraulic symbols and schematic reading basics
- ✱ Troubleshooting a closed-loop hydraulic system
- ✱ Best practices for maintenance of hydraulic systems in general
- ✱ Operation of over-center variable displacement piston pumps and hydraulic motors



Training Courses

Basic DC Electrical

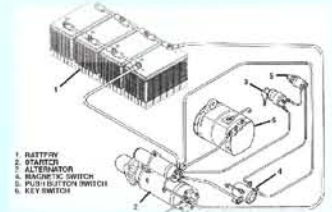
(8-Hour Course)

Basic DC Electrical Dates:

* December 10, 2011

In this new course, you will learn:

- * The basics: volts, amps, ohms
- * Voltage drops and drop testing
- * Using a Multi-Meter, Digital Storage Oscilloscope (DSO), and other testing tools
- * Switches, senders, sensors
- * Troubleshooting charging and starting circuits and electrical circuits on mobile equipment



Reading Electrical Schematics

(8-Hour Course)

In this new course, you will learn:

- * Electrical symbols
- * Using paper and electronic schematics
- * Reading ladder schematics

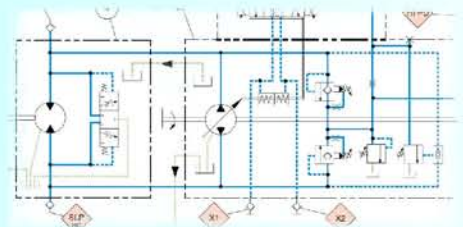


Reading Hydraulic Schematics

(8-Hour Course)

In this new course you will learn:

- * Hydraulic Symbols
- * Using paper and electronic schematics
- * Reading hydraulic schematics



Computer Skills for Mechanics

(4-Hour Course)

In this new course, you will learn:

- * Using online resources for mechanics (CAT WEB-SIS) and exploring automotive online libraries
- * High level overview of Excel
- * Making a resume using Word



*Contact the Training Office to Sign Up
for these courses*

Training and Lodging Information

Training courses are Monday through Thursday from 7:00 a.m. to 5:30 p.m. at the Ellensburg Training Center (unless otherwise stated). The heavy equipment and crane courses consist of both indoor classroom time and also hands-on training outside with the equipment. The weather in Ellensburg can vary so it is important that participants are able and willing to learn outside during the elements. Students should come prepared for training just as though they were going to a job. Personal protective equipment is required at all times while outdoors near the training areas. The Training Program provides accommodations Sunday through Wednesday nights in a local Ellensburg hotel. When training is confirmed by the Training Center Office, lodging directions and information will be mailed.

Lunch is served at the Training Center, but students may bring their own food if preferred; microwaves and refrigerators are available at the Training Center. Following the day's training, dinner is provided at local restaurants.

Ellensburg Training Center Directions

- * Heading on I-90 East take Exit 115 (Kittitas)
- * At off-ramp, take a left & follow the road through the Main Street of Kittitas
- * At stop sign on Main Street, take a right turn onto Patrick Avenue
- * Follow road to the left as it splits (turns into No. 81 Road)
- * At next stop sign take a right turn onto Vantage Highway
- * Training Center is located approximately 5 miles on the left side

www.oetraining.com

~ Check the site for important information, updates, and new courses ~



Union Halls

IUOE Local 302
18701 - 120th Avenue NE
Bothell, WA 98011
Office: (425) 806-0302
www.iuoe302.org



IUOE Local 612
1555 Fawcett Avenue
Tacoma, WA 98402
Office: (253) 572-9612
www.iuoe612.org

Apprenticeship Training Program

The Operating Engineers' Apprenticeship Program is sponsored by the International Union of Operating Engineers in conjunction with the Associated General Contractors, for the purpose of recruiting and training those interested in careers working with heavy equipment. Apprentices who are assertive, have the right attitude, aptitude, work ethic, and show genuine interest in every phase of their work make the most successful Operating Engineers.

Selection of apprentices is based upon conditions in the job market. The apprenticeship is an "Earn While You Learn" program with wages starting around \$22 per hour, as well as a good benefit package. The union is full-referral and will assist you with securing a job. Once you reach Journey Level status, opportunities worldwide could open up to you!

Apprenticeship Trades:

- ~ Heavy Equipment Operator
- ~ Hoisting (Cranes)
- ~ Heavy Duty Mechanic
- ~ Construction Site Surveyor (Grade Tech)
- ~ Paving careers through the Apprenticeship

How to Apply:

The Training Programs are now accepting applications!

Access the application on the website at: www.oetraining.com

Call the Training Center Office to have an application mailed to you: 509-968-3203



2011 Entry Level Apprentices & Staff

Training At A Glance

Heavy Equipment Courses:

(Grade Checking, Excavator, Backhoe, Loader, Dozer, Blade)

November 7 - 17, 2011
November 21 - December 1, 2011
December 5 - 15, 2011
January 3 - 12, 2012
January 16 - 26, 2012 (No Grade Checking)
January 30 - February 9, 2012
February 13 - 23, 2012
February 27 - March 8, 2012
March 12 - March 22, 2012 (No Grade Checking)
April 2 - 12, 2012
April 16 - April 26, 2012 (No Grade Checking)
October 22 - November 1, 2012
November 5 - 15, 2012
November 19 - 29, 2012
December 3 - 13, 2012

Crane Training:

November 21 - December 15, 2011
January 3 - 26, 2012
January 30 - February 23, 2012
February 27 - March 22, 2012
March 26 - 29, 2012 Seat Time / Practical Exams
April 2 - 26, 2012
April 30 - May 24, 2012
May 29 - 31, 2012 Seat Time / Practical Exams
October 22 - November 15, 2012
November 19 - December 13, 2012

Tower Crane:

November 21 - December 1, 2011
December 5 - 15, 2011
January 3 - 12, 2012
January 16 - 26, 2012
January 30 - February 9, 2012
February 13 - 23, 2012
February 27 - March 8, 2012
March 12 - 22, 2012
October 22 - November 1, 2012
November 5 - 15, 2012
November 19 - 29, 2012
December 3 - 13, 2012

CDL Training:

November 21 - December 15, 2011
January 3 - 26, 2012
January 30 - February 23, 2012
February 27 - March 22, 2012
March 26 - April 19, 2012
April 23 - May 17, 2012
May 21 - June 14, 2012
October 22 - November 15, 2012
November 19 - December 13, 2012

40-HR Hazmat:

November 14 - 18, 2011 @ Bothell
December 10 - 11 and 17 - 18, 2012 @ Bothell
January 14 - 15 and 21 - 22, 2012 @ Bothell
February 6 - 10, 2012 @ Ellensburg
February 27 - March 2, 2012 @ Tacoma
November 5 - 9, 2012 @ Bothell
December 10 - 14, 2012 @ Tacoma

8-HR Hazmat Refresher:

November 5, 2011 @ Tacoma
November 19, 2011 @ Bothell
December 7, 2011 @ Tacoma
December 16, 2011 @ Bothell
January 7, 2012 @ Bothell
January 28, 2012 @ Tacoma
February 11, 2012 @ Ellensburg
February 18, 2012 @ Bothell
March 31, 2012 @ Silverdale
April 21, 2012 @ Tacoma
May 5, 2012 @ Bothell
May 19, 2012 @ Tacoma
July 21, 2012 @ Tacoma
November 10, 2012 @ Bothell
December 15, 2012 @ Tacoma

OSHA 10:

November 28 - 29, 2011 @ Bothell
January 9 - 12, 2012 @ Bothell
January 24 - 25, 2012 @ Tacoma
March 19 - 20, 2012 @ Bothell
November 12 - 13, 2012 @ Bothell

OSHA 30:

October 31 - November 3, 2011 @ Ellensburg
January 16 - 19, 2012 @ Bothell
March 5 - 8, 2012 @ Tacoma

Disaster Site Worker:

March 20 - 22, 2012 @ Bothell

Paving:

November 21 - December 1, 2011
December 5 - 15, 2011
January 3 - 12, 2012
January 16 - 26, 2012
January 30 - February 9, 2012
February 13 - 23, 2012
February 27 - March 8, 2012
March 12 - March 22, 2012
April 2 - 12, 2012
April 16 - April 26, 2012
October 22 - November 1, 2012
November 5 - 15, 2012
November 19 - 29, 2012
December 3 - 13, 2012

POQ/ Trenching & Shoring:

November 30, 2011 @ Bothell
December 6, 2012 @ Tacoma
March 17, 2012 @ Bothell
November 14, 2012 @ Bothell

Supervisor Training:

March 26 - 28, 2012 @ Bothell

Refinery Safety Overview:

December 1, 2011 @ Bothell
December 5, 2011 @ Tacoma
January 7, 2012 @ Bothell
February 25, 2012 @ Tacoma
May 11, 2012 @ Bothell
November 15, 2012 @ Bothell
December 7, 2012

Forklift Safety:

November 13, 2012 @ Bothell

Forklift Training and Seat Time:

November 7 - 10, 2011
November 14 - 17, 2011
January 30 - February 2, 2012
February 6 - 9, 2012
March 12 - 15, 2012
March 19 - 22, 2012
April 16 - 19, 2012
April 23 - 26, 2012

First Aid/CPR:

December 1, 2011 @ Bothell
December 5, 2011 @ Tacoma
January 20, 2012 @ Bothell
February 25, 2012 @ Tacoma
March 22, 2012 @ Bothell
April 14, 2012 @ Tacoma
November 15, 2012 @ Bothell
December 7, 2012 @ Tacoma

ADV Grade Tech/Construction Surveyors:

To Be Determined...

Grade Engineering:

January 16 - 17, 2012
January 23 - 24, 2012
April 16 - 17, 2012
April 23 - 24, 2012

GPS:

January 18 - 19, 2012
January 25 - 26, 2012
April 18 - 19, 2012
April 25 - 26, 2012

Entry-Level Apprentice Training:

April 30 - May 10, 2012 @ Bothell (Safety Weeks)
May 14 - June 21, 2012

All Training Courses Are Subject To Change
Check the Website for Updates- www.oetraining.com

Course Request Form

Please complete the form and mail or fax to:

Operating Engineers' Regional Training Program

16921 Vantage Highway ~ Ellensburg, WA 98926 ~ Fax: (509) 968-4422

You may also call the Training Center with class requests (509) 968-3203

Please Print Clearly:

Name: _____ Last 4 SSN Digits: _____

Address: _____

City: _____ State: _____ Zip Code: _____

Phone Number: _____ Cell Phone: _____

E-Mail: _____

Please write in your course requests with desired start dates. Every attempt will be made to place you in a course, but should the courses be full, you will be automatically be placed on a waiting list and notified of an opening.

Course: _____ Course Date: _____

Course: _____ Course Date: _____

Course: _____ Course Date: _____

~ YOU WILL BE NOTIFIED WITH A CONFIRMATION LETTER LISTING THE COURSE AND START DATE OF THE TRAINING YOU HAVE BEEN PLACED IN ~

When requesting your first class for the training year, a \$25 training participation deposit* needs to be submitted to the Training Center-

You will not be placed on a waiting lists or in a course until payment is received.

Check, Money Orders, or Debit/Credit cards are accepted - No Cash Please!

For more information call the Training Center Office at: 1-800-333-9752.

The Training Program reserves the right to change or cancel courses at any time.

* In an effort to eliminate members not showing up for scheduled journey-level classes and depriving others the opportunity to receive training, a \$25 training participation deposit is required. If you must cancel your assigned class, reasonable notice must be given to the Training Center Office. If requirements are all met, your \$25 deposit will be refunded to you at the end of the training season.

OPERATING ENGINEERS' REGIONAL TRAINING PROGRAM

16921 VANTAGE HIGHWAY

ELLENSBURG, WA 98926

WWW.OETRAINING.COM



**LABOR-MANAGEMENT
TRAINING TOGETHER**